

GRINDER RK

Grinder RK finely grinds material in water, sludge and waste.

GRINDER RK

The machine combines the advantages of comminutors and industrial waste shredders. It handles both wet and dry material in both closed pipes and open channel flows. Slowly counter-rotating blade wheels ensure that all material passing through is ground.

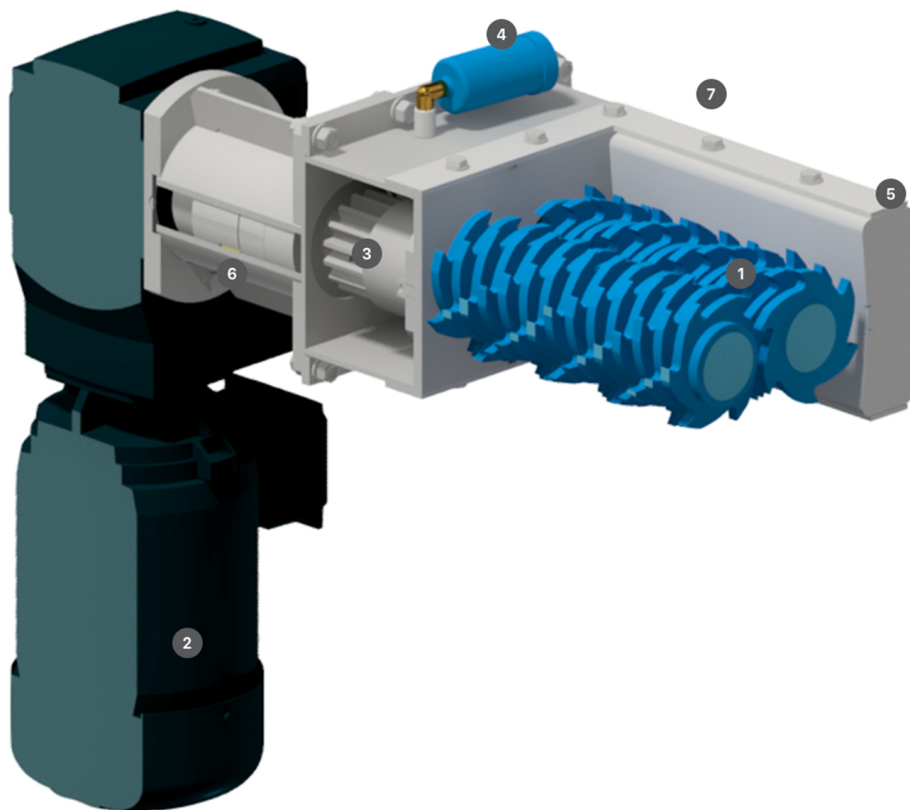
Multi-shaft wet waste grinders have been tried and tested for 40 years with thousands of references. The concept is a refinement of comminutors and dry waste shredders to meet the requirements of today.

FUNCTIONS

- Strong design with stainless steel housing.
- Can be used for both wet and dry materials.
- Can be assembled closed between pipe flanges or open in water streams, channels and shafts.
- Can be combined with presses and screens to increase the efficiency of each machine.
- High material capacity.
- The drive unit is available with shaft extension, submersible motor and hydraulic operation as options.

SPECIFICATIONS

Width	<600 mm
Capacity	<250 m ³ /h
Drive unit	SEW/Nord
Material	EN 1.4301, EN 1.4404



EXPLODED VIEW

1. Blades in water-cut Hardox steel
2. Powerful motor/gearbox
3. Transmission ensuring continuous feeding and destruction of material
4. Lubrication dispenser (1-year interval)
5. Frame entirely made of stainless steel
6. Variable shaft length for adaptation to different applications
7. Modular frame for compatibility with rectangular interface or flange connection