



MULTI RAKE MR

Multi Rake MR is a mechanical coarse screen that separates solid particles, screenings and debris from wastewater.

MULTI RAKE MR

The machine is used for coarse separation before pump stations, water intakes and treatment plants, or as a protective screen before sensitive fine separation. Chain operation with several rakes provides rapid cleaning cycles, which in turn create a high flow and transport capacity.

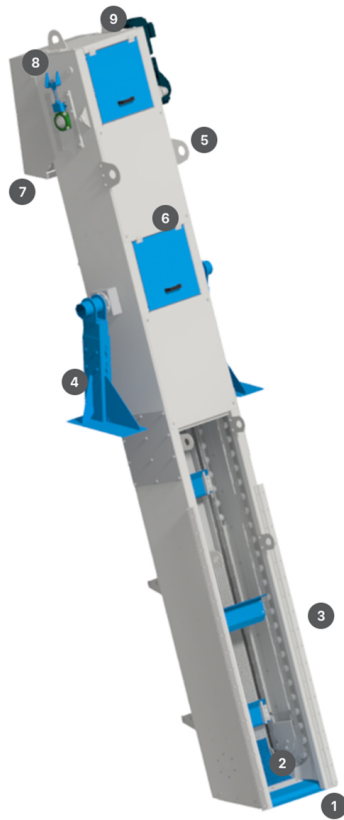
Multi Rake has curved bottom bars and a low blind step for higher capacity and optimal material transport. Bars, spacing and rake elements are easily replaceable for safe handling.

FUNCTIONS

- Curved bottom rods for higher capacity
- Low blind step
- Optimal material transport
- Replaceable rods, gap widths and rake elements
- Stainless chains and idlers
- Can be delivered in sections for easier assembly and delivery.
- Quality construction in strong stainless high-quality material in steel raw material as well as drive, bearings and chains.
- Enclosed, ventilated, safe and hygienic.
- Easy-to-open hatches.

SPECIFICATIONS

Discharge height	<8 m
Effective width	<2 000 mm
Bar-spacing	12-100 mm
Capacity	<10 000 l/s
Drive unit	SEW/Nord
Material	EN 1.4301, EN 1.4404



EXPLODED VIEW

1. Low blinding in bottom step
2. Curved bars for precise scraping
3. Reinforced scraper profiles with teeth that effectively collect screened debris
4. Project-specific support legs for easy pivoting
5. Integrated lifting eyes simplify installation
6. Easily accessible inspection hatches
7. Debris discharge
8. Reinforced tensioning device
9. Modular construction height